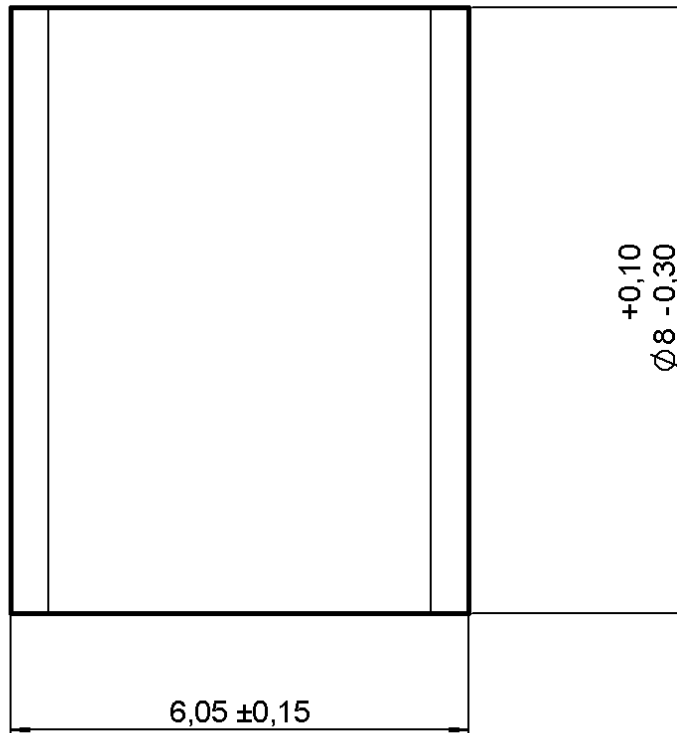


GAS CAPSULE 230V 20KA

R445.999.103

Series : **GDT**



All dimensions are in mm.



COMPONENTS	MATERIALS	PLATINGS (μm)
ELECTRODES	METAL	
INSULATOR	CERAMIC	
-		
-		
-		
-		
-	-	-
-	-	-

Issue : 0044 A

In the effort to improve our products, we reserve the right to make changes judged to be necessary.



GAS CAPSULE 230V 20KA

R445.999.103

Series : **GDT**

PACKAGING

Standard	Unit	Other
1		Contact us

ELECTRICAL CHARACTERISTICS

Nominal DC spark-over voltage : **230 V +/- 20%**

Impulse spark-over voltage at 1 kV/μs : **< 600 V**

Nominal impulse discharge current (wave 8/20μs) : **20 kA**

NA NA

NA Nominal alternating discharge current (50Hz, 1s) : **20 A**

NA

Insulation resistance : **10¹⁰ Ohm at 100 V**

2.5

00.000 Capacitance : **< 1.5 pF**

MECHANICAL CHARACTERISTICS

Weight **1.316 g**

ENVIRONMENTAL

Operating temperature : **-40 / 100 °C**

Storage temperature : **-40 / 100 °C**

Relative humidity : **NA**

Climatic category (IEC 68-1) : **40/100/21**

Issue : **0044 A**

In the effort to improve our products, we reserve the right to make changes judged to be necessary.

